



**Concept Design of Chestnut  
Street, N.W.  
From Oregon Avenue to  
Western Avenue**



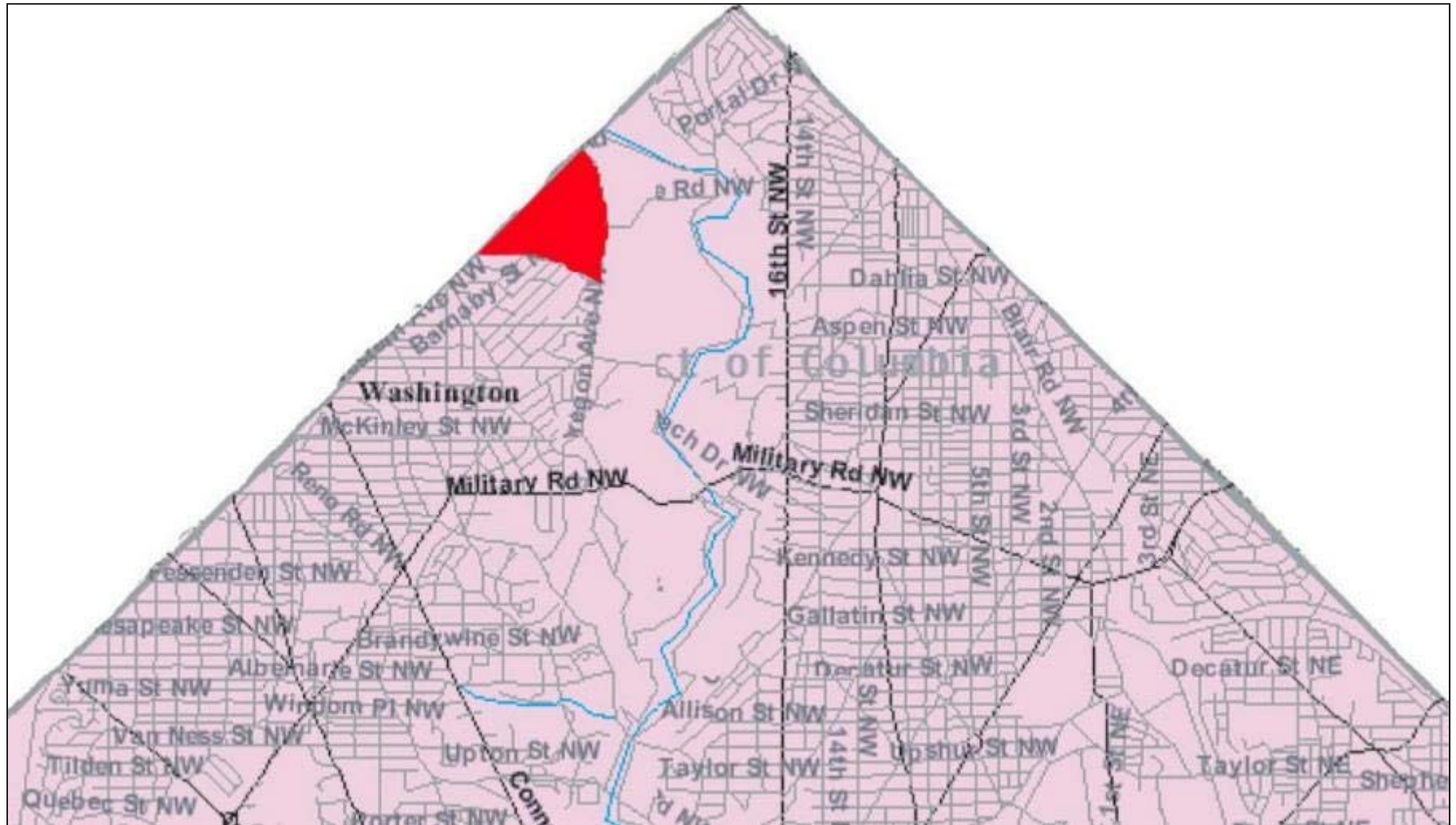
**May 10, 2017**

**Infrastructure Project Management Administration  
District Department of Transportation  
with  
Precision Systems, Inc.**

# PROJECT VISION

- **Protect natural beauty and environment (tree canopy)**
- **Maintain safe neighborhood (LED streetlights)**
- **Promote neighborhood identity**
- **Improve multi-modal transportation safety**
- **Enhance pedestrian accessibility with ADA compliance**

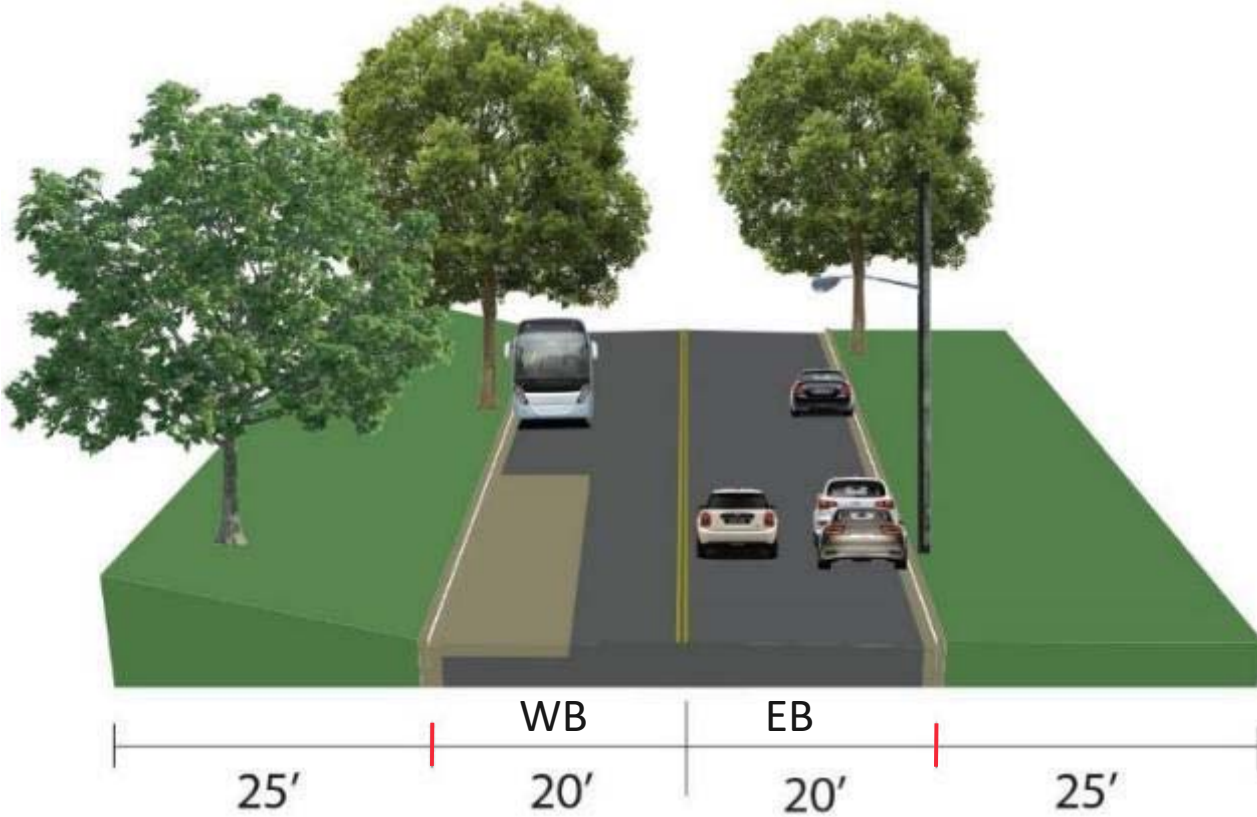
# HAWTHORNE COMMUNITY



# PROJECT MAP

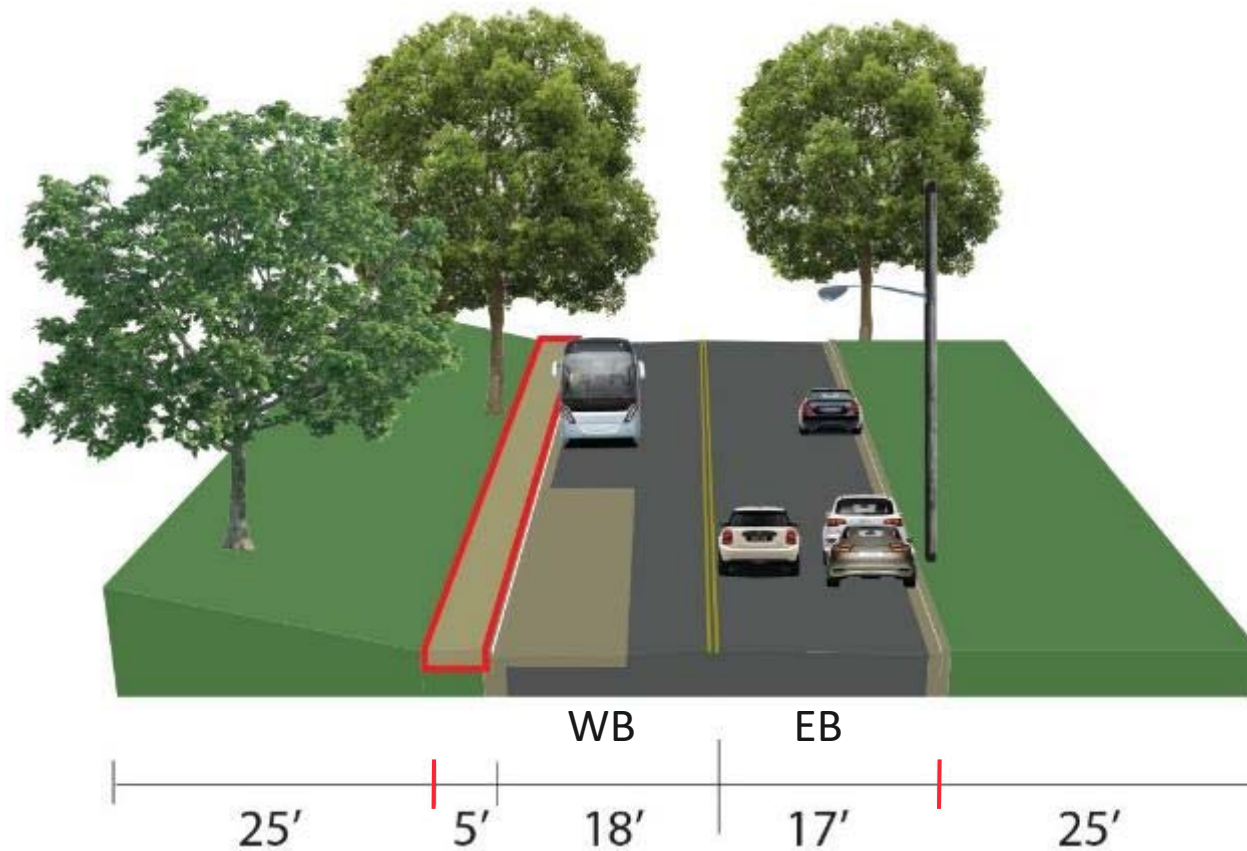


# CROSS SECTION – NO BUILD



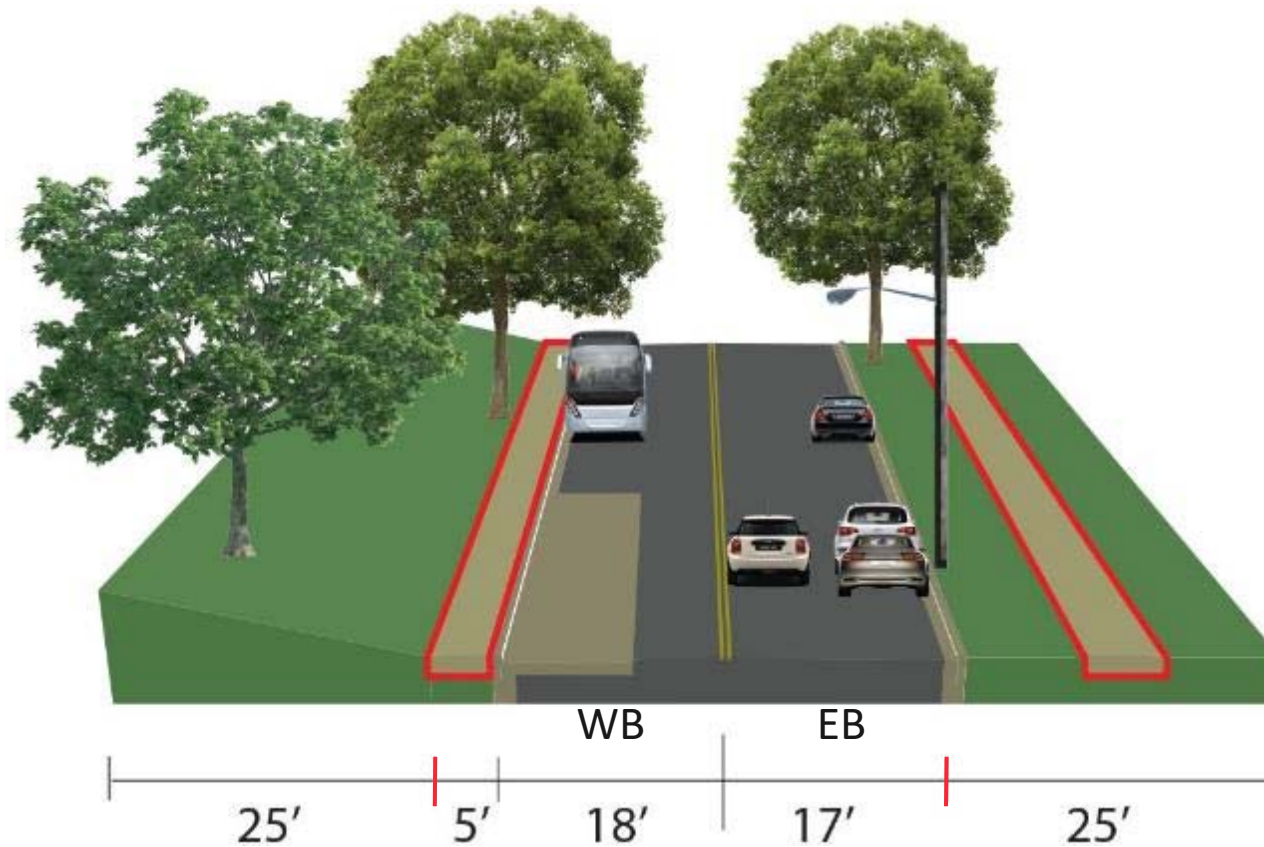
Pros	Cons
<ul style="list-style-type: none"><li>- No construction impact</li></ul>	<ul style="list-style-type: none"><li>- Pedestrians currently walk in the street or on grass</li><li>- Does not comply with sidewalk requirements</li><li>- Bus stops: passengers alight on grass</li><li>- Speeding</li></ul>

# ALT 1 – NORTH SIDE CURB EXTENSION AND SIDEWALK



Pros	Cons
<ul style="list-style-type: none"><li>- Walkway for pedestrians</li><li>- Complies with sidewalk requirements</li><li>- Lower construction cost</li><li>- Approximately 37 new trees</li><li>- Bus stop passenger landing</li><li>- Reduced speed / traffic calming</li><li>- No impact to current green space</li><li>- Street parking on both sides</li></ul>	<ul style="list-style-type: none"><li>- No sidewalk on south side</li></ul>

# ALT 2 – NORTH SIDE CURB EXTENSION; BOTH SIDES SIDEWALK



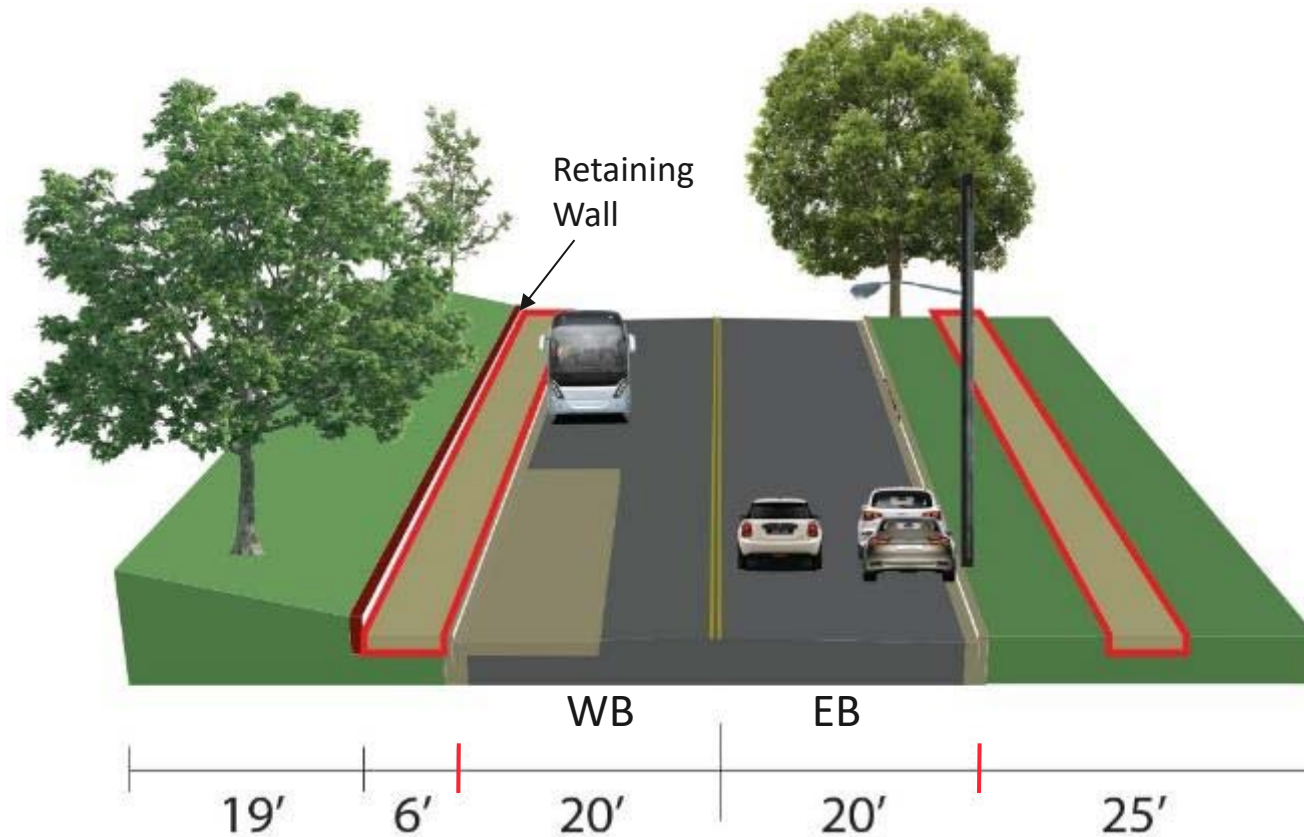
## Pros

- Walkway for pedestrians
- Complies with sidewalk requirements
- Approximately 37 new trees
- Bus stop passenger landing
- Reduced speed / traffic calming
- No impact to current green space
- Street parking on both sides

## Cons

- Need to remove approximately 3 trees
- Moderate cost

# ALT 3 – CURB LINES REMAIN; BOTH SIDES SIDEWALK



Pros	Cons
<ul style="list-style-type: none"> <li>- Walkway for pedestrians</li> <li>- Complies with sidewalk requirements</li> <li>- Approximately 21 new trees</li> <li>- Bus stop passenger landing</li> <li>- Maintains parking on both sides</li> </ul>	<ul style="list-style-type: none"> <li>- Retaining walls</li> <li>- Impact on steps</li> <li>- Removal of approximately 34 trees</li> <li>- Cost is highest</li> <li>- Speeding</li> </ul>



# LANDSCAPE: CONTEXT SENSITIVE SOLUTIONS

- Retain tree-lined neighborhood character
- Develop material selection options for curb and gutter, sidewalk, walls, landscaping, traffic control, and lighting
- Provide options from successful installations of nearby streetscapes as well as innovative solutions



# QUESTIONS?

## Public Outreach Coordinator:

Kimberly Manning

Phone: 202-422-5210

[kjm@tinaboydandassoc.com](mailto:kjm@tinaboydandassoc.com)