

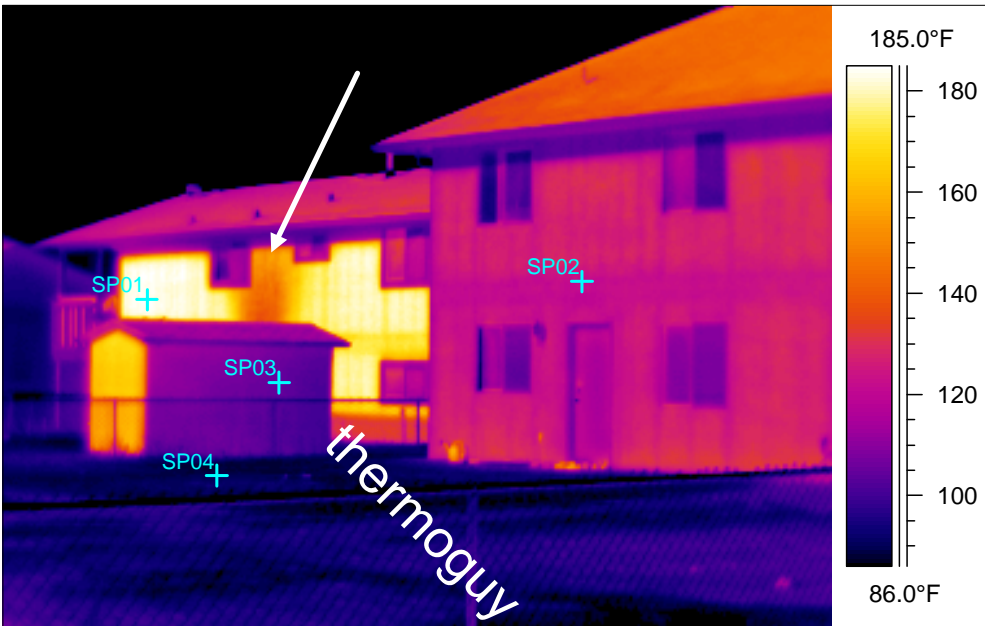
Building Development Exceeding Building Code

IR information	Value
Date of creation	7/24/2011
Time of creation	4:07:48 PM
Object parameter	Value
Atmospheric temperature	86.0°F
Relative humidity	0.23
Label	Value
SP01	83.7°F
SP02	111.9°F
SP03	86.5°F

IR information	Value
Date of creation	7/24/2011
Time of creation	4:06:29 PM
Object parameter	Value
Atmospheric temperature	86.0°F
Relative humidity	0.23

Use the zoom features of the viewer to magnify areas of interest and there is a scale to the right of each infrared image so you can reference color/temperature information. Use the shade of the tree so you can see the angle of the sun at this time of the afternoon.

We are supposed to blend in with our building development and you can see we aren't using the best materials to protect from solar radiation. Spot #3 shows the shade from a car that was parked there, look at the green space and tree performance. The pavement will hold the heat for a long period of time. All of this has a cumulative effect on climate and water. The next page will show a building 185 deg. F at 6:00 PM.



It is 6:04 PM and the West exposure of the darker building has generated heat 185 degree F when the weather station is reporting 86 degrees F.

The building development is designed and insulated for a maximum of 92 degree F. Air conditioning(refrigeration) is being used indoors reacting to the heat inside the building.

The white arrow is highlighting a slightly cooler area on the wall which is caused by the fan from the air conditioning unit sitting on the ground. Note the 60 degree difference in the lighter colored building and grass or green space is 89 degrees F.

Reflect or protect from UV or your investment will be radiated by high speed EMFs from the sun.

Solar radiated development, clear cuts, deforested areas are generating extreme heat. Building development is reacting to the symptoms with massive energy waste, GHG emissions including Mercury(autism) while the buildings across the world cook the atmosphere. Climate change, weather severity, floods, droughts, fire intensity, etc are the result. Stop the heat, don't create it and eliminate energy waste immediately.

What do all UN Members and countries have in common? They are all blind to these temperatures.

IR information	Value
Date of creation	7/24/2011
Time of creation	6:04:55 PM
Object parameter	Value
Atmospheric temperature	86.0°F
Relative humidity	0.25
Label	Value
IR : max	185.9°F
SP01	184.8°F
SP02	121.6°F
SP03	105.3°F
SP04	89.1°F